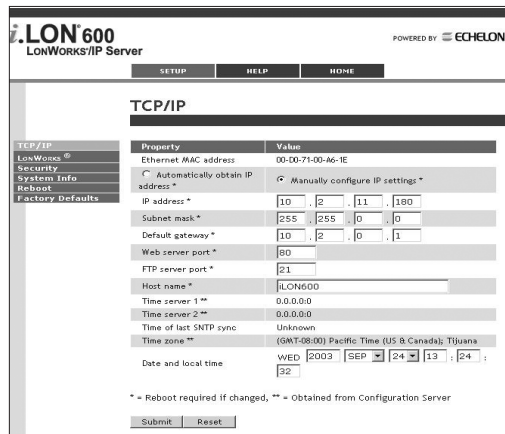


1 Install the i.LON 600 software

1. Insert the i.LON 600 CD into your PC. If the installation program fails to start, navigate to your CD-ROM drive and double-click **setup.exe**.
2. Follow the instructions in the Setup Wizard.

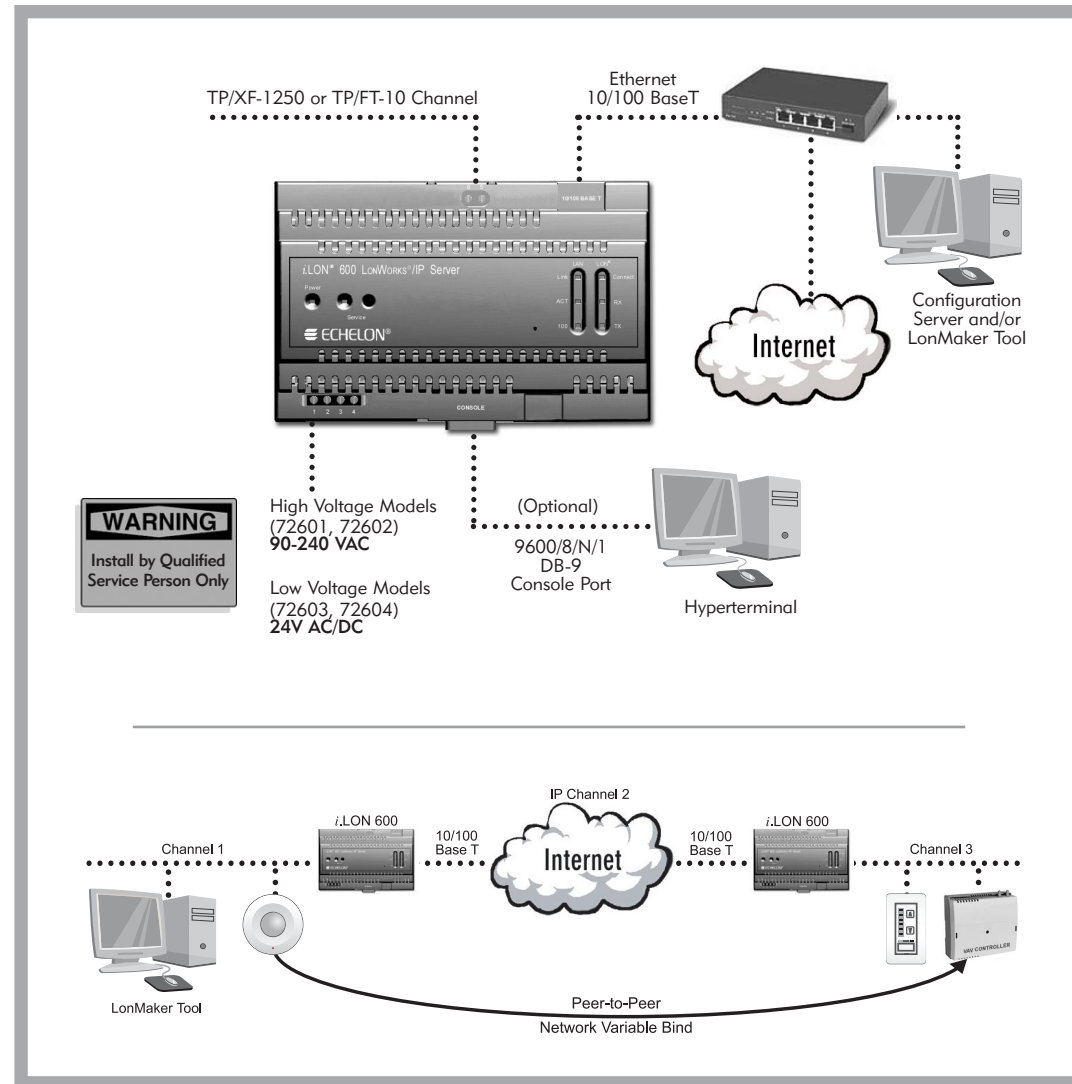
2 Connect the i.LON 600 hardware directly to your PC using an Ethernet cable

1. If your PC is not on the 192.168.1.0 subnet, open a DOS command prompt and issue the following command:
route add 192.168.1.0 mask 255.255.255.0 %computername%
Your PC may also need a static IP address.
2. Open Internet Explorer and enter the following URL:
192.168.1.222 (the i.LON 600 default IP address)
3. Click **TCP/IP** in the Setup menu.



4. Enter **ilon** in the User Name and **ilon** in the Password fields and click **OK**.
5. Enter a new set of TCP/IP parameters.
6. Click **Submit**.
7. Reboot your i.LON 600 for the parameters to take effect.
8. Connect the i.LON 600 to your network.

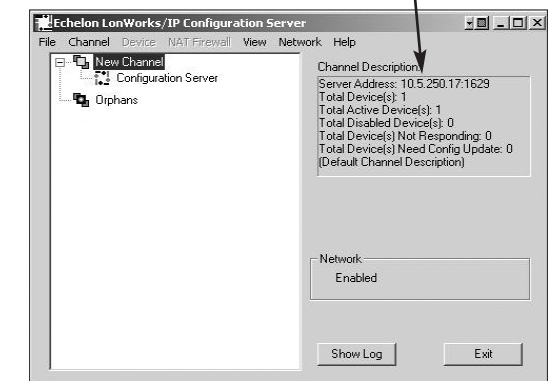
Routing LonTalk[®] Over IP



This quick start is available in video form on the i.LON 600 LONWORKS/IP Server distribution CD under the \VIDEOS subdirectory.

3 Create the LonWORKS/IP channel using the Configuration Server

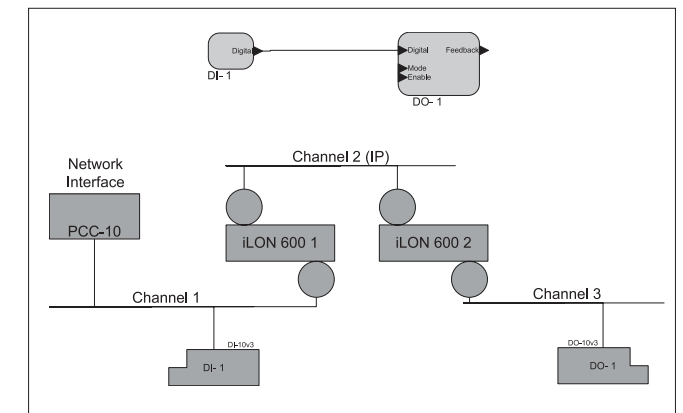
1. Click **Start | Programs | Echelon i.LON 600 | LONWORKS-IP Configuration Server**. The Configuration Server should automatically detect and display the IP address of your PC.



2. Add your i.LON 600 device to the LONWORKS/IP channel by right clicking on **New Channel** in the device tree and selecting **New Device**. Enter a name for your i.LON.
3. Double click the entry created in step 2 and enter the IP address & time zone for your i.LON in the dialog provided.
4. Repeat steps 2 & 3 for all i.LONs in your LONWORKS/IP channel.
5. When all devices have been added to the device tree, right click on **New Channel** and select **Update Members**.
6. Verify that all icons representing i.LON 600 devices turn green.

4 Create a new network using the LonMaker[™] Tool

1. With the configuration server still running in the background, start the LonMaker tool and create a new network drawing.

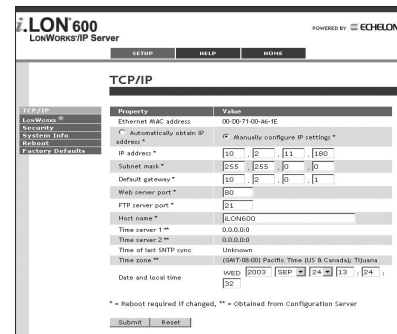


1 Install the i.LON 600 software

1. Insert the i.LON 600 CD into your PC. If the installation program fails to start, navigate to your CD-ROM drive and double-click **setup.exe**.
2. Follow the instructions in the Setup Wizard.

2 Connect the i.LON 600 hardware directly to your PC using an Ethernet cable

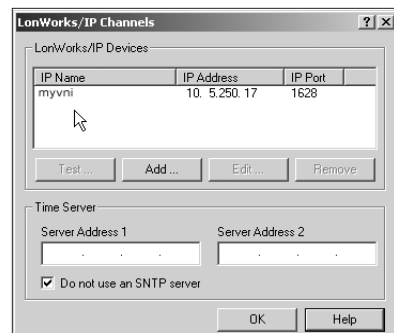
1. If your PC is not on the 192.168.1.0 subnet, open a DOS command prompt and issue the following command:
`route add 192.168.1.0 mask 255.255.255.0 %computername%`
 Your PC may also need a static IP address.
2. Open Internet Explorer and enter the following URL:
 192.168.1.222 (the i.LON 600 default IP address)
 Your PC may also need a static IP address.
3. Click **TCP/IP** in the Setup menu.



4. Enter **ilon** in the User Name and **ilon** in the Password fields and click **OK**.
5. Enter a new set of TCP/IP parameters.
6. Click **Submit**.
7. Reboot your i.LON 600 for the parameters to take effect.
8. Connect the i.LON 600 to your network.

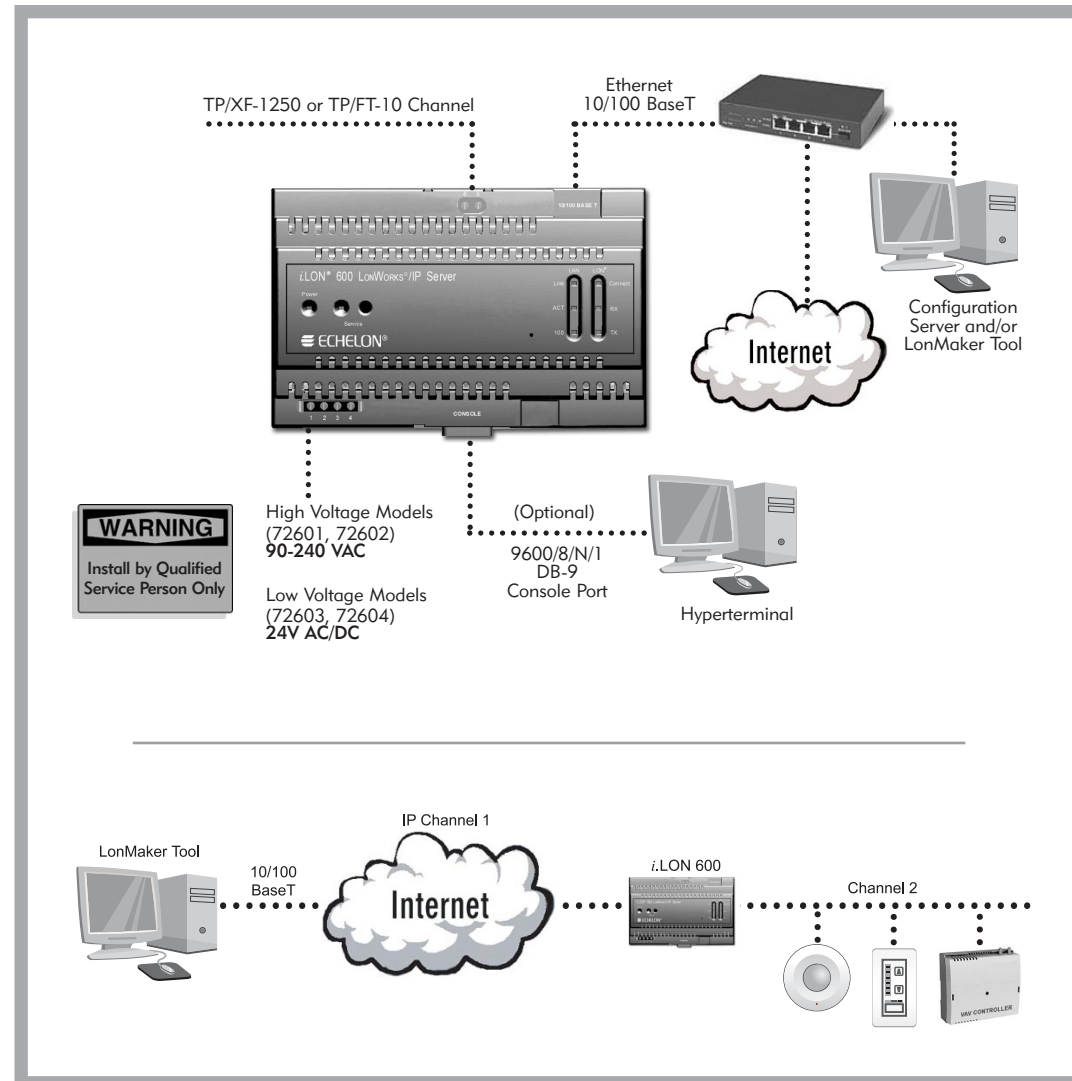
3 Create a local LonWorks/IP Interface

1. Click **Start | Settings | Control Panel | LONWORKS/IP Channel Interface** and run the **LONWORKS/IP Channel Interface** control panel applet.
2. Click the **Add** button. Enter a name for your PC (note that the IP address and port have already been filled in for you).



3. Click **OK** and exit the applet.

Using the i.LON 600 as a Network Interface

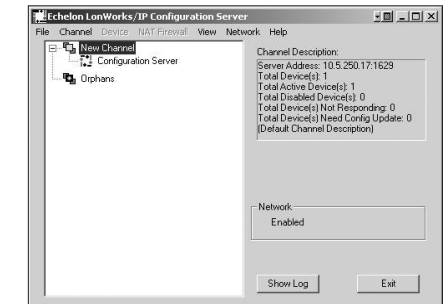


This quick start is available in video form on the i.LON 600 LONWORKS/IP Server distribution CD under the \VIDEOS subdirectory.

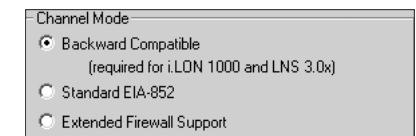
www.echelon.com/ilon
www.echelon.com/support

4 Create the LonWorks/IP channel using the Configuration Server

1. Click **START | PROGRAMS | Echelon i.LON 600 | LONWORKS-IP Configuration Server**. The Configuration Server should automatically detect and display the IP address of your PC.



2. If your network management tool uses LNS[®] 3.0x, double-click **New Channel** and select **Backward Compatible**.



3. Add your i.LON 600 device to the LONWORKS/IP channel by right clicking on **New Channel** in the device tree and selecting **New Device**. Enter a name for your i.LON.
4. Double click the entry created in step 3 and enter the IP address & time zone for your i.LON in the dialog provided.
5. Repeat steps 3 & 4 to add your PC. (The configuration server treats a PC with a local LONWORKS/IP interface in the same way it treats an i.LON 600.)
6. When all devices have been added to the device tree, right click on **New Channel** and select **Update Members**.
7. Verify that the icons representing i.LON 600 and PC turn green. If the PC's icon does not turn green, open the LonMaker[™] tool using the local LONWORKS/IP interface as the network interface and repeat step 6.

5 Create a new network using the LonMaker Tool

1. With the configuration server still running in the background, start the LonMaker tool and create a new network drawing. (Be sure to select the interface "myvni" that you created in section 3 as your network interface.)

