

Mini EVK FT Quick Start Guide



1

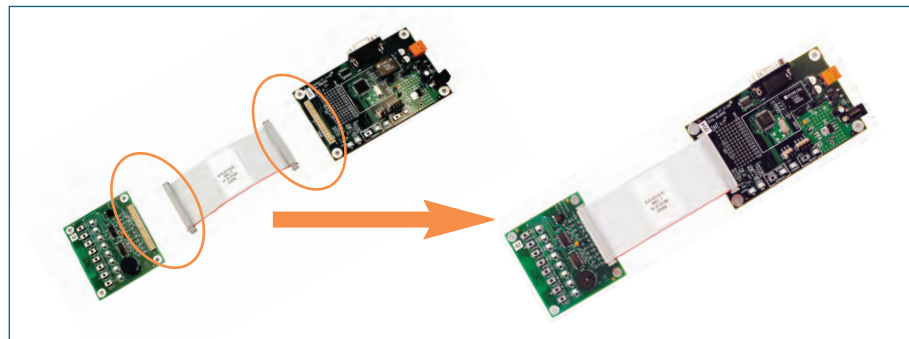
Insert the Mini EVK CD into your CD-ROM drive.

1. The Mini EVK installer starts automatically.
2. Follow the on-screen instructions to install the software.
3. When you have finished, eject the CD.

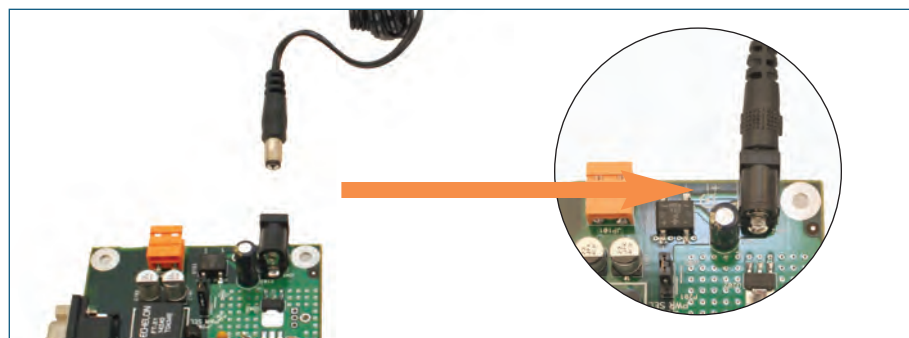
2

Assemble the Evaluation Boards and run the demo application.

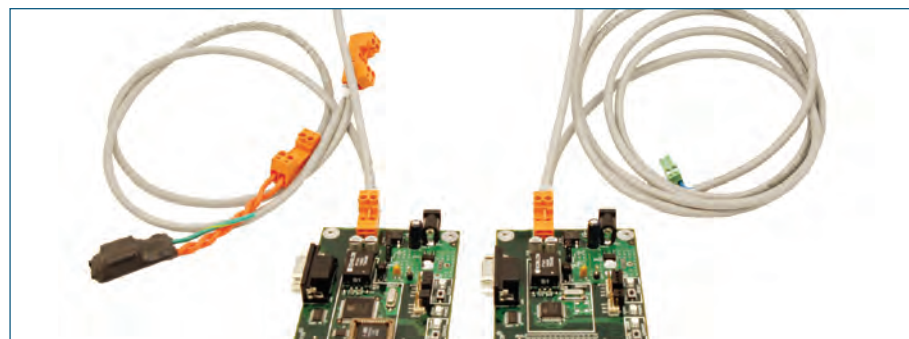
1. Connect each MiniGizmo to an Evaluation Board.



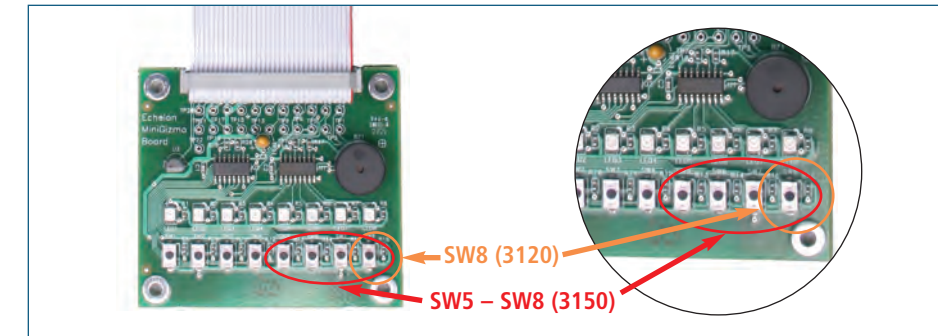
2. Connect a Mini EVK Power Supply to each Evaluation Board, and then plug-in the power supplies.



3. Connect the orange network connector on each Evaluation Board to an orange network connector on the network cable included with your Mini EVK.



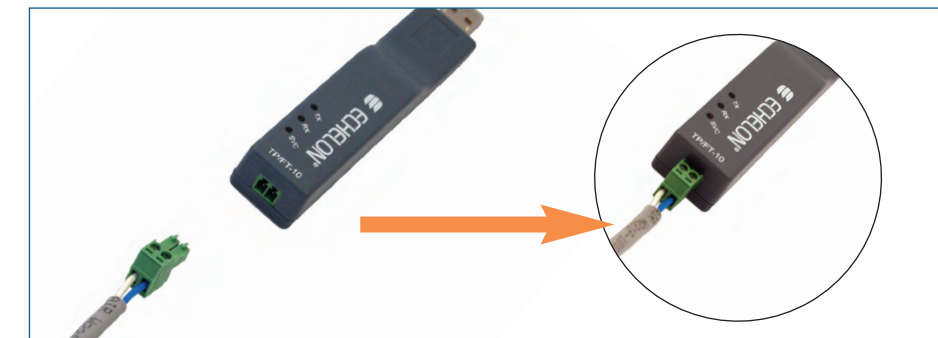
4. Connect push buttons on the FT 3120® Evaluation Board to LEDs on the FT 3150® Evaluation Board by pushing the **Connect** button (SW5 – SW8 on the 3150 Evaluation Board or SW8 on the 3120 Evaluation Board) on either board, then the **Connect** button on the other board, and then pressing **Connect** button on the first board again.



3

Attach your computer to the TP/FT-10 channel.

1. Connect the green network connector on the network cable to the U10 USB Network Interface.



2. Plug the U10 USB Network Interface into a USB port on your computer.

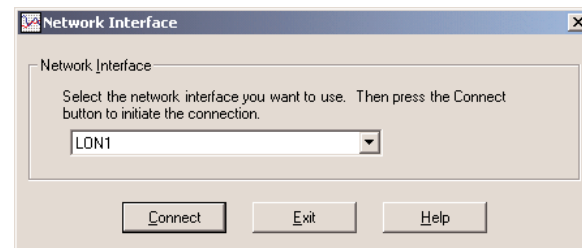


3. On Windows XP and Windows Server 2003, choose any of the three Windows Update options, at your preference. Click **Next** to continue.
4. Select **Install the Software Automatically (Recommended)**. Click **Next** to continue.
5. A completion dialog appears. Click **Finish**.

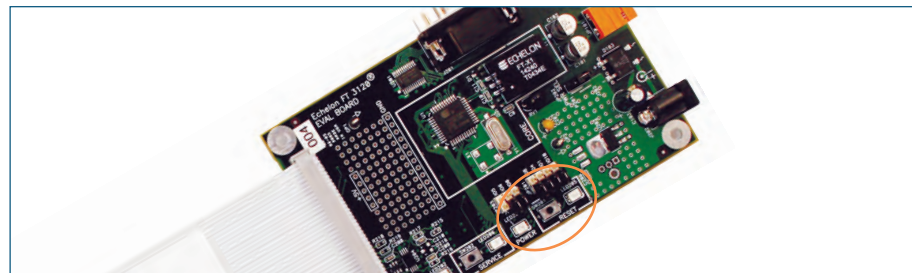
4

Run the Monitoring & Control Example Application.

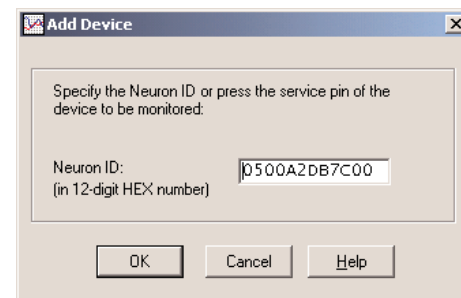
1. Click the Windows **Start** button, point to **All Programs**, point to **Echelon Mini EVK**, and then click **Monitoring & Control Example Application**.
2. Select **LON1** as the network interface, and then click **Connect**.



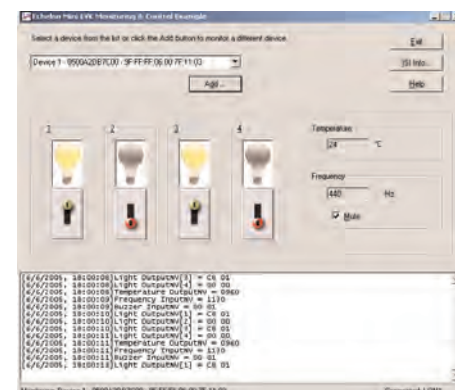
3. Click **Add** to open the **Add Device** dialog, and then press the FT 3150 Evaluation Board's **Service** button. The board's Neuron® ID appears on the **Add Device** dialog.



4. Click **OK** to connect the board to the Monitoring & Control Example Application.



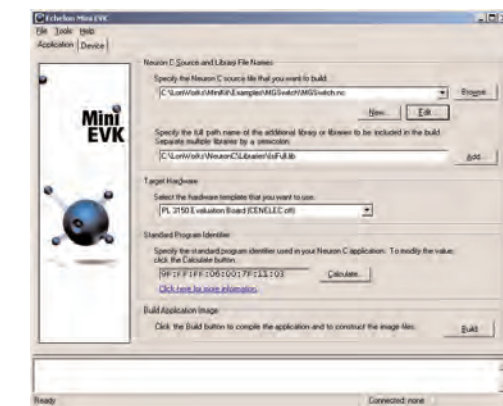
5. Control the MiniGizmo LEDs by clicking the light switch icons, and monitor the MiniGizmo temperature sensor.



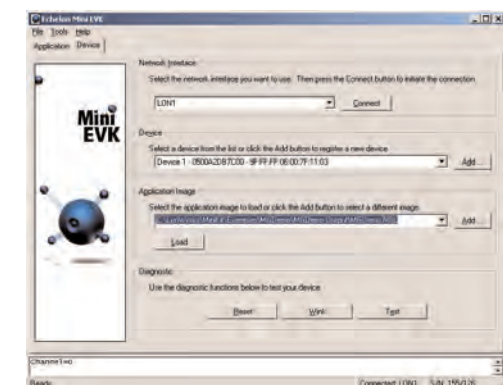
5

Use the Mini EVK Application to load other example applications and to create your own applications.

1. Click the Windows **Start** button, point to **All Programs**, point to **Echelon Mini EVK**, and then click **Mini EVK Application**.
2. To create an application, write Neuron C code using a text editor of your choice such as Windows Notepad, and then use the **Application** tab to select your source file, select your target hardware, and then build an application image. Alternatively, you can select one of the example applications.



3. Click the **Device** tab, select **LON1** as the network interface, and then click **Connect**.
4. Press the **Service** button on your device, and then click **OK** to select the device.
5. Select an application image to load, and then click **Load** to load the application image into the device.



6

For more information, see the following documentation included in your Echelon Mini EVK program folder:

- **Mini EVK User's Guide**—for more information on the examples and how to develop applications with the Mini Application.
- **Mini EVK Hardware Guide**—for more information on the Evaluation Boards and MiniGizmo.
- **Introduction to the LonWORKS® System**—for more information on the LonWORKS platform.